

Department 110 – Animal & Veterinary Science

CLASS A – Veterinary Science

- Open to youth enrolled in the 4-H Veterinary Science project or youth of other groups doing equivalent work.
- No more than 5 entries in Class A. 1 per lot.
- Face-to-face judging on Tuesday from Noon – 6 PM.
- Entries could be posters, displays, or scrapbooks.
- Premiums: \$1.75 - \$1.50 - \$1.25 - \$1.00

Lot numbers

1. Vet Science 1
2. Vet Science 2
3. Vet Science 3
4. Vet Science 4
5. Vet Science 5



Ideas for Vet Science Educational Exhibits

Veterinary Science exhibits can be about any animal (farm animals, pets, etc.)

- Anatomy/Parts of an animal
- Animal disease that can spread to humans
- Animal nutrition
- Animal reproduction
- Animal stresses
- Characteristics of 5 breeds of an animal
- Disease prevention
- Diseases
- Importance of genetics in breeding
- Parasites
- Poster on a part of an animal's system
- Proper care of an animal
- The heart and blood flow
- Three types of muscle tissue
- Tools of a veterinary
- Veterinary careers
- Veterinary terminology
- Any other topic related to veterinary science

CLASS B – Pets

Entry Information

- No more than 4 pets per exhibitor. 1 per lot.
- Pet exhibitors are eligible to enter a Pet Educational exhibit. See Dept. 110 -Class J.

Exhibit Information

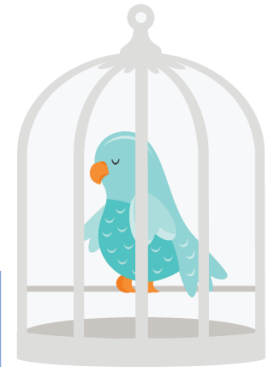
- Judged Danish on Sunday beginning at 12:30 pm in Building #4 – Small Animals. Plan to arrive by 12:15.
- Caged birds that do not have their plumage may not be exhibited.
- Supply your own cages. Be sure your cage is secure.
- Cavy exhibitors must put name of breed on entry tag.
- Ferrets must be vaccinated for rabies by a licensed veterinary at least 1 month prior to date of show.
- Proof of vaccination must be presented to the superintendent upon entry.
- Pets may leave when judging is finished. All pets must be claimed by 5 PM on Sunday.
- Premiums: \$2.00 - \$1.75 - \$1.50 - \$1.25

Lot numbers

101. Pet 1
102. Pet 2
103. Pet 3
104. Pet 4

Pets:

Caged birds, cavies, ferret, gerbil, hamster, reptile, rodent, pet rabbit, or any other pet.



Animal and Vet Science Educational Exhibits

- Open to exhibitors enrolled in the 4-H Vet Science project or in the listed animal projects or youth of other groups doing equivalent work.
- Limited to **3** entries per class. 1 per lot.
- Face-to-face judging on Tuesday Noon – 6 PM in building #11
- Premiums: \$1.75 - \$1.50 - \$1.25 - \$1.00

Ideas for Educational Exhibits

- Breeds
- Parts of the animal
- Nutritional value of products from animal
- Keeping your animal healthy
- Disease or parasites
- Scrapbook of breeds (minimum of 10 pages)
- Scrapbook of activities in project (minimum of 10 pages)
- Any other topic related to the project

CLASS C – Dairy Educational Exhibits

Lot numbers

- 201. Dairy Educational 1
- 202. Dairy Educational 2
- 203. Dairy Educational 3

CLASS D – Beef Educational Exhibits

Lot numbers

- 204. Beef Educational 1
- 205. Beef Educational 2
- 206. Beef Educational 3

CLASS E – Swine Educational Exhibits

Lot numbers

- 207. Swine Educational 1
- 208. Swine Educational 2
- 209. Swine Educational 3

CLASS F – Sheep Educational Exhibits

Lot numbers

- 210. Sheep Educational 1
- 211. Sheep Educational 2
- 212. Sheep Educational 3

CLASS G – Goat Educational Exhibits

Lot numbers

- 213. Goat Educational 1
- 214. Goat Educational 2
- 215. Goat Educational 3

CLASS H – Horseless Horse and Horse & Pony Educational Exhibits

Lot numbers

- 242. Educational poster on a horse related topic
- 243. Any other educational display on a horse related topic

CLASS I – Dog Educational Exhibits

Lot numbers

- 244. Educational poster on a dog related topic
- 245. Scrapbook on a dog related topic
- 246. Educational display on a dog related topic

CLASS J – Pets Educational Exhibits

Lot numbers

- 247. Educational poster on a pet related topic
- 248. Scrapbook on a pet related topic
- 249. Educational display on a pet related topic

CLASS K – Cat Educational Exhibits

Lot numbers

- 250. Educational poster on a cat related topic
- 251. Scrapbook on a cat related topic
- 252. Educational display on a cat related topic



Poster Rules

- Posters must be designed on or affixed to standard poster board (14" x 22" or 22" x 28")
- Displays must not exceed 36" x 48".
- Posters may use any medium: watercolor, ink, crayon, acrylic, charcoal, oil, computer-generated, collage, etc.
- Staple entry tag on the front in the top right-hand corner.
- Posters/displays should be dated on the back with the current fair year.